

EAE
ELITE ACOUSTICS



EAE
ELITE ACOUSTICS
A2B8x-5 - Four Channel Mixer/Monitor
w/ Bluetooth®, Effects & Built-in Rechargeable Battery

A2-5

Live-Performance Studio Monitor with
4 Channels, Mixer, Effects, and Bluetooth®



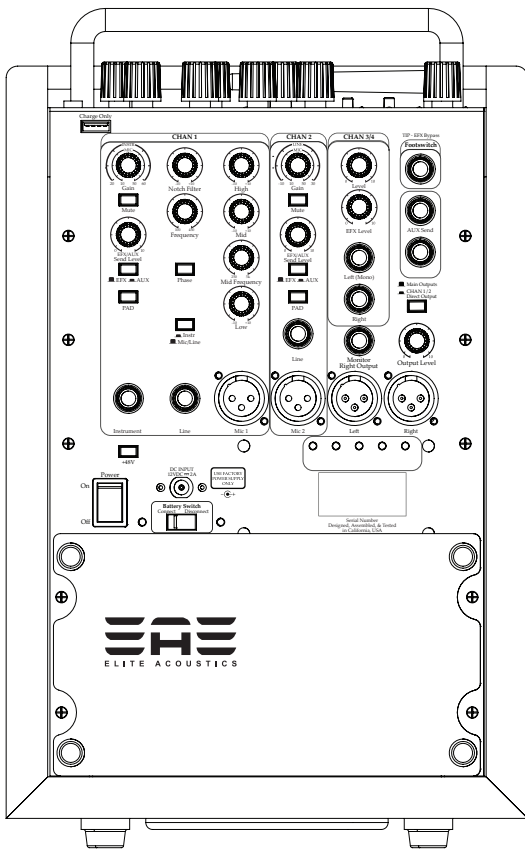
For Maximum Battery Life
- Do not charge when you are not using it.
- Low to recharge battery at least once a month.
- Do not leave power switch on the "ON" position when it is not in use.
- Keep unit in a cool, dry place - do not store in extreme heat or humidity.
- Do not use any, modify, or replace the battery.
- If the battery does not charge, contact Elite Acoustics®.

WARNING
This product is the original speaker model built with a genuine Elite Acoustics Engineering. It is a warning. Engineering cannot guarantee the safety and reliability of products from other manufacturers. Use or an unapproved battery may void all warranties.





A2-5 Live-Performance Studio Monitor with 4 Channels, Mixer, Effects, and Bluetooth®



Elite Acoustics' A2-5 Live-Performance Studio Monitor with Mixer, Effects, and Bluetooth features: 4 input channels and integrated Digital Effects with an efficient Class D bi-amp driving a 5 1/4" woofer and 1 inch silk-dome tweeter to deliver maximum clarity. The Mastering section contains a 3-band EQ, Master Volume and stereo AUX input with level control. Switchable Direct Out or line-level monitoring outputs are provided for daisy chaining to additional powered speakers. A2-5 preserves the stereo outputs thereby allowing true stereo playback when integrated with additional speakers. The cabinet is constructed from solid MDF to ensure durability and high fidelity sound, and contains an integrated pole-cup. A2-5 utilizes a metal chassis with panel-mounted POTs/Jacks. The included charger doubles as a power supply for non-battery powered operation. A2-5 can also be powered and charged from a car (charger included) and once fully charged, the speaker can provide 15 hours of playing time. Built-in overcharge/over-drain circuits protect the battery to maximize battery life. Designed and assembled in USA.

Input & Output Connectors							
Nominal Output Level (1kHz)	Stereo Inputs	Channel 1 & 2*	Channel 3/4	Auxiliary In Jack	Main & Direct Outputs	Footswitch & AUX Send & Return	Power
Right Channel Link Out : -10 dBu Main/Direct Output : +4 dBu	1/4" Left/Right Input	One XLR, Two 1/4" TRS	Two 1/4" TRS	1/8"	One 1/4" TRS Two XLR(Left/Right)	One 1/4" TRS Two 1/4" TRS	DC Jack In

Controls			
Channel 1	Channel 2	Channel 3/4	Master
Gain, Mute, Phase, EFX/AUX Send Level EFX/AUX & Mic/Instr Select, Notch Filter, EQ	Level, Mute, EFX/AUX Send Level & PAD Select	Level Knob & EFX Send Level	Volume Knob & Equalizer (Low Freq Knob, Mid Freq Knob, High Freq Knob), Effect Mix, Decay/Rate, Effects Program Select

Controls			Specifications								
Power Switch	Master Indicators	Auxiliary In	Woofer	Tweeter	Amplifier	Power Supply	Current Draw	Power	Built-In Pole-Mount	Dimension	Weight
Yes	Signal Clip and Power	Level Knob	5 1/4"	1"	Class D Bi-AMP	DC 12V	2000 mA	30W	35mm Receptacle On Bottom Of Unit	9"L x 9"W x 14.5"H	22 lbs.

Other Features							
Frequency Response	Rechargeable Battery w/ Meter	Battery Switch	Bluetooth	USB	Front Ports	Magnetic Shielding	Accessories
55Hz-22kHz (+/-3dB)	Up to 15 Hours Play Time	Slide Switch	Yes	Charging Only	Optimized For Extended Low-Frequency Response	Eliminates Interference With Other Electronic Equipment	AC Cord, AC Adaptor, DC Cord For The Car, Owner's Manual

*Channel 2 contains only one 1/4" trs phone type
 **Due to continuous development & improvements of our products, features specifications are subject to change without notice. All weights & measures are approximate.