



How do I update the software/firmware on my D6-8?

Latest version: D6 SOFTWARE_UPDATER_V101_PC.ZIP


System Requirements:

This program should run on any PC running Windows 8.1 or later.

In order for the program to communicate with your D6-8 you will also need a MIDI interface and the driver for that device installed prior to running this application. One of the MIDI Interface that will work with our product is the [Roland UM-ONE](#)

Setting Up:

Extract the latest version of software/firmware updater application at your PC.

Name	Date modified	Type	Size
 D6 SOFTWARE_UPDATER_V101_PC.exe	7/16/2018 1:52 PM	Application	1,051 KB



POWER UP D6 UNIT:

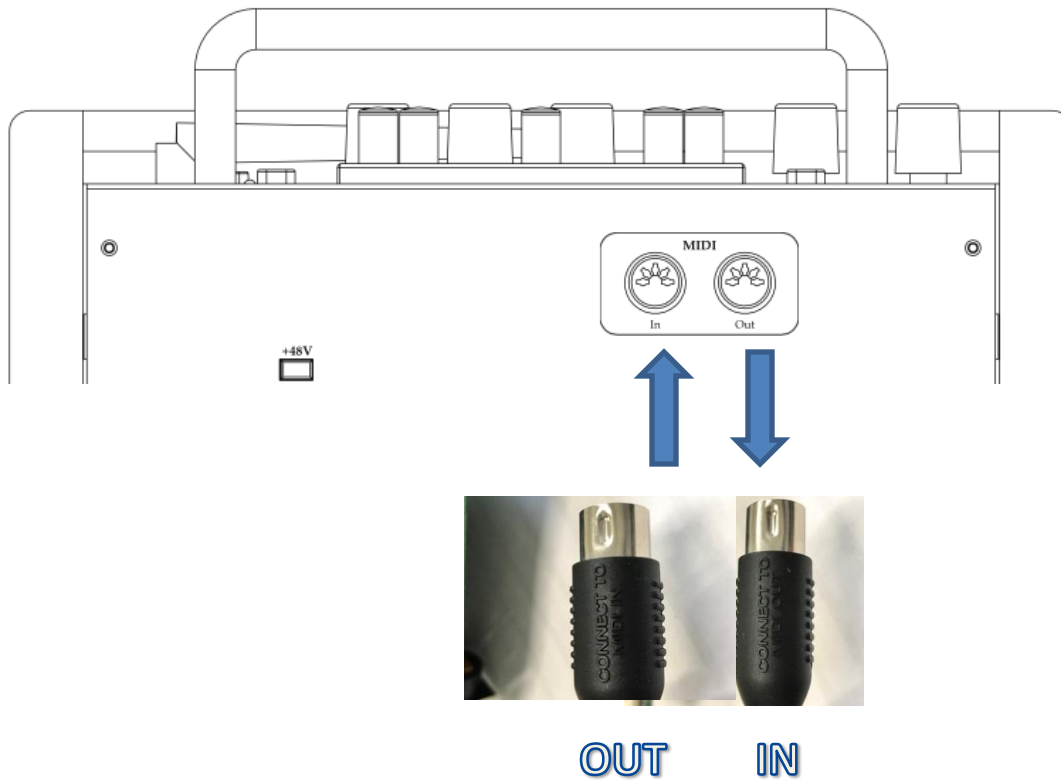
Turn on D6 unit. Make sure to be on the Main Mix page.





Connections:

Connect the MIDI OUT from your interface to the MIDI IN port of your D6-8 and the MIDI IN from the MIDI interface to the MIDI OUT port on your D6-8.





Open the application or Updater :

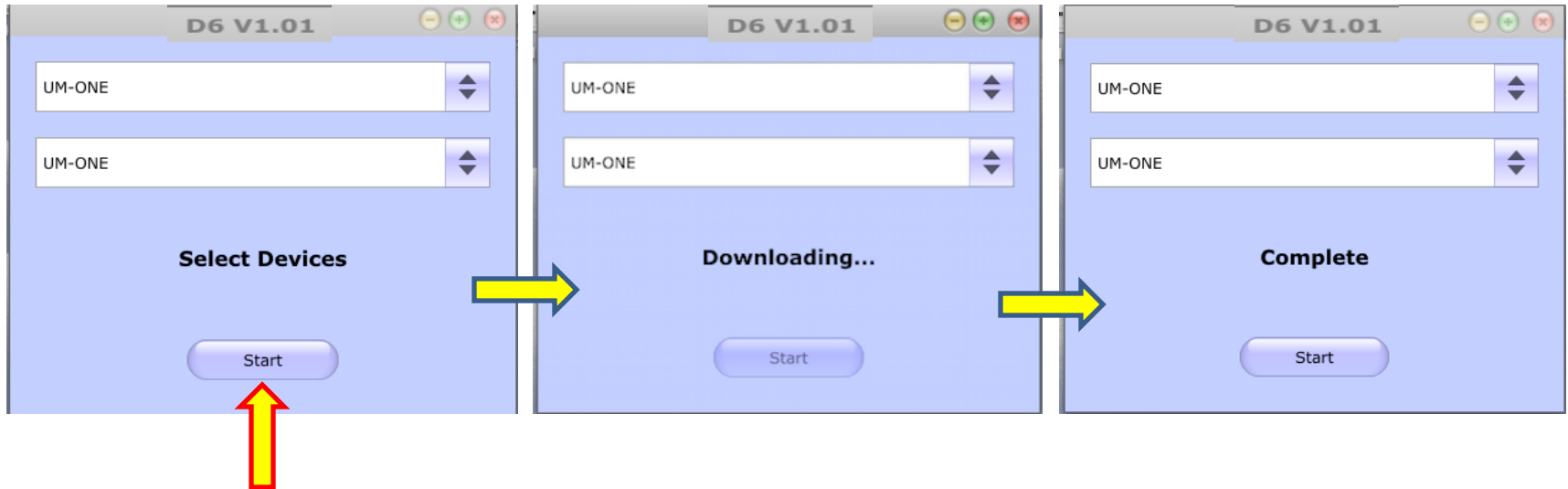
Setting Up Your MIDI Interface. Navigate to each pull down window, select “UM-ONE” as the MIDI interface.





Start the Update:

Click on “Start”. Close the application after the update has been “Complete”.

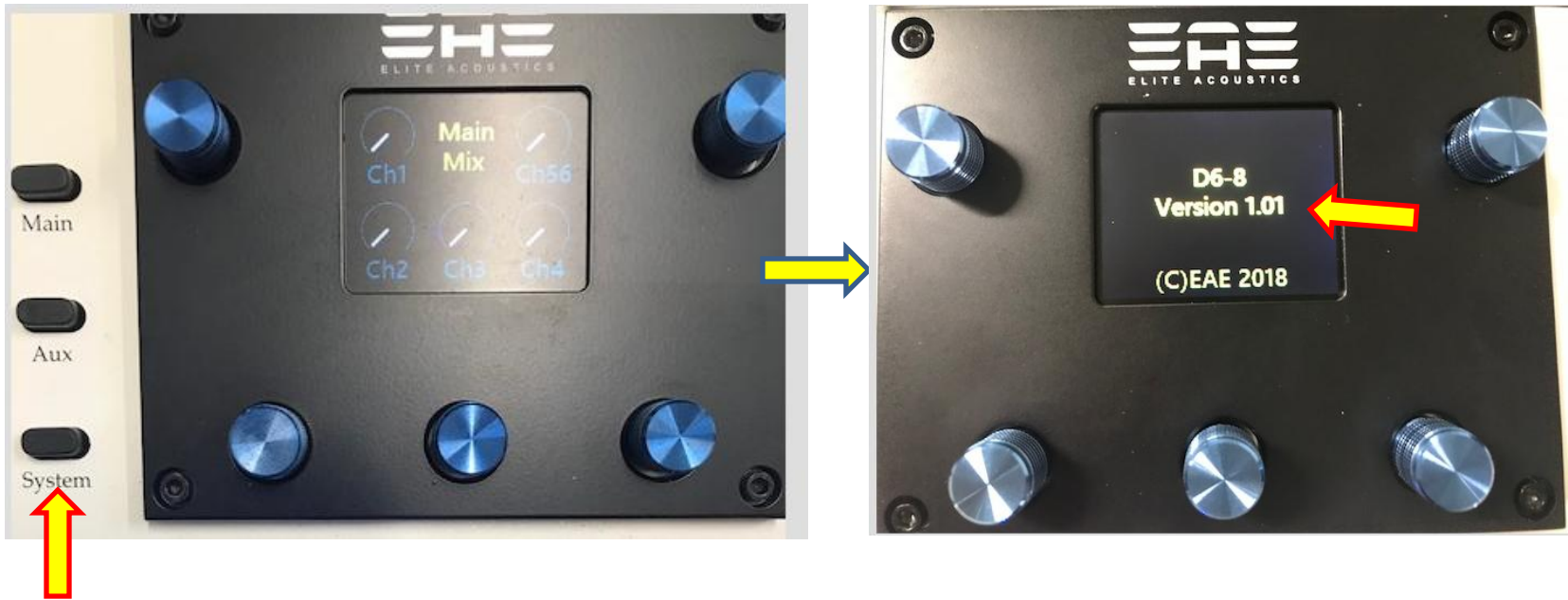


Turn OFF the D6-8 unit:

Wait for a few seconds and turning the D6-8 unit back on.

Verify the Update:

You can confirm the update was installed successfully as follow.



Tab on the “System” button a few times until you get to last page. It will display unit software version.

If you have any questions or problems making the update, please contact EAE for support.
Thank You.